

COVID 19 (Coronavirus) Update

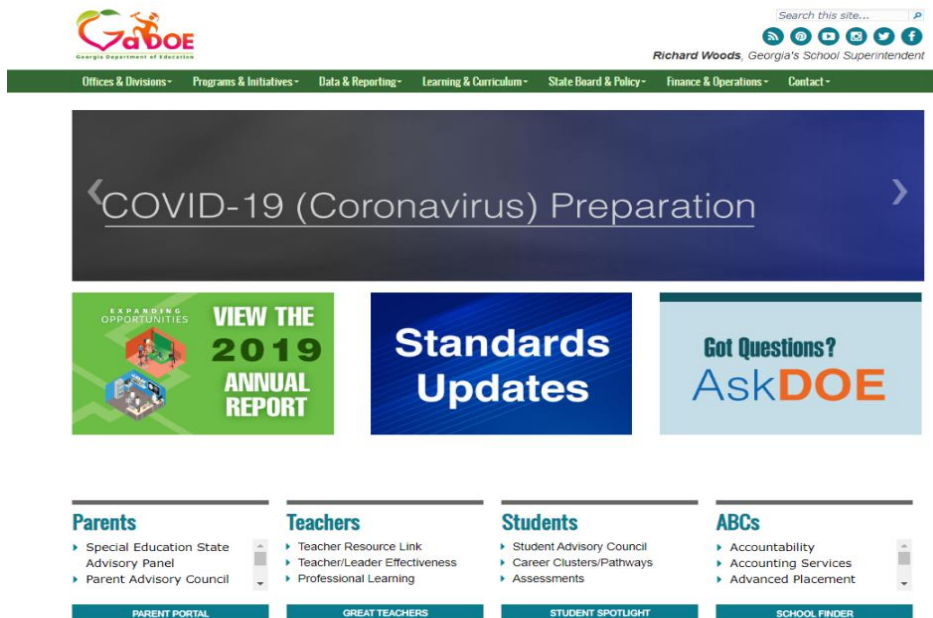
**Governor's Office
Georgia Department of Public Health
Georgia Department of Education**

March 11, 2020



Submit questions at any time to

schoolsafety@doe.k12.ga.us

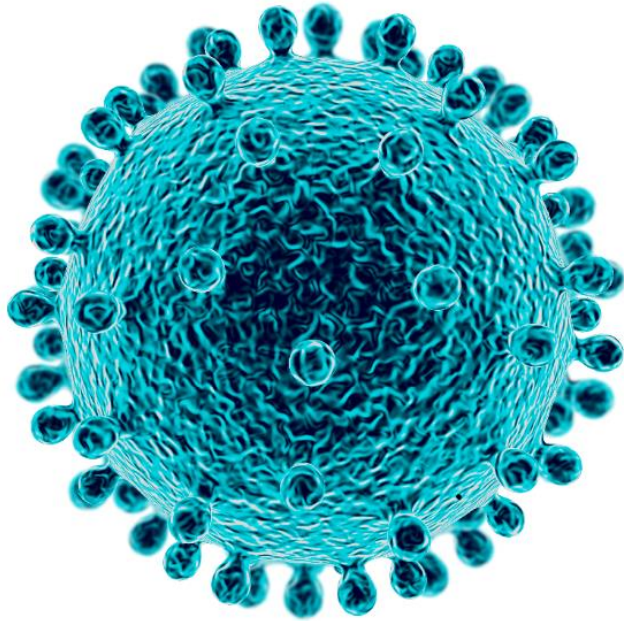


Check the webpage for updates to Frequently Asked Questions (FAQ)

Coronavirus Disease 2019 (COVID-19)

COVID-19 is an emerging, rapidly evolving situation. The information provided in this power point is based on current guidance and is subject to change. (*Created 3-6-2020*)

What Do We Know About Coronaviruses?



Coronaviruses have a crown-like appearance under the microscope

Coronaviruses are a large family of viruses - some cause illness in people, and others only infect animals.

Some coronaviruses infect animals then spread to people, and then spread person to person such as:

- Middle East Respiratory Syndrome (MERS)
- Severe Acute Respiratory Syndrome (SARS)
- **Coronavirus Disease 2019 (COVID-19)**

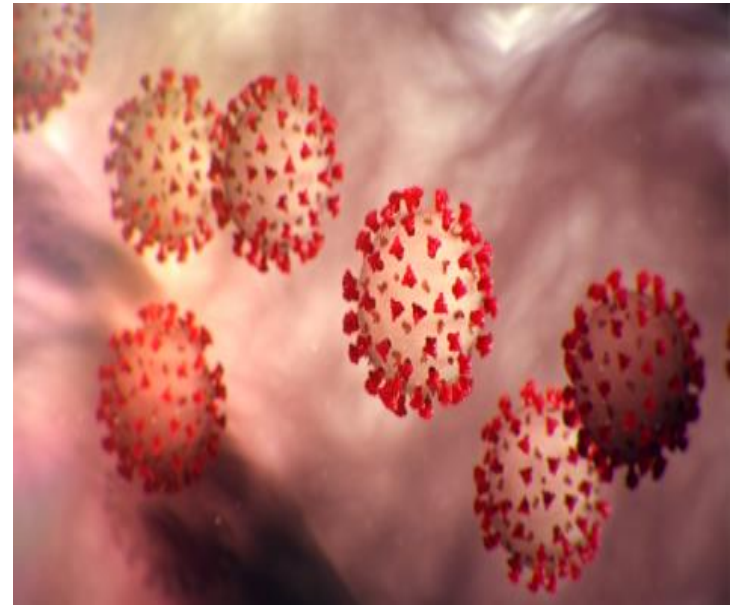
Common coronaviruses include some that cause mild upper-respiratory illnesses, like the common cold.

What is COVID-19?

Coronavirus disease 2019 or COVID-19 is a respiratory illness that can spread from person to person.

The virus that causes COVID-19 is a **new** coronavirus first identified during an investigation into an outbreak in Wuhan, Hubei Province, China.

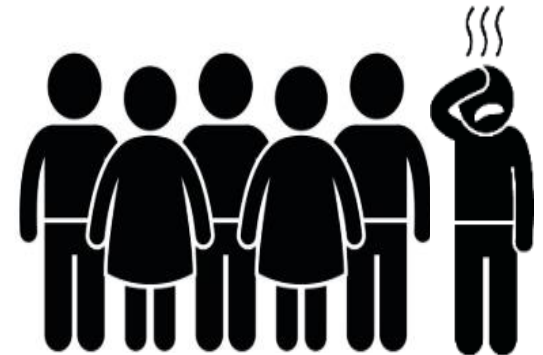
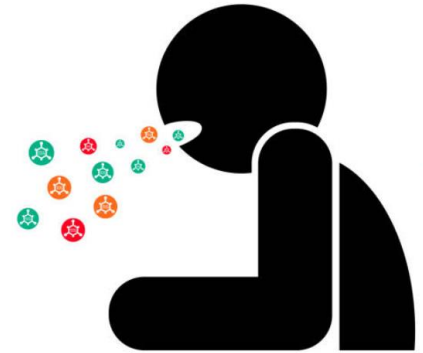
Initial case-patients reported visiting a large seafood and live animal market in Wuhan.



How Does COVID-19 Spread?

COVID-19 spreads the same way the flu and other respiratory diseases spread:

- Through respiratory droplets produced when an infected person coughs or sneezes.
- These droplets can land in the mouths or noses of people who are nearby or possibly be inhaled into the lungs.
- Between people who are in close contact with one another (within about 6 feet).



What are the Symptoms of COVID-19?

Symptoms of COVID-19 are:

- Fever
- Cough
- Shortness of breath

Symptoms appear **2 to 14 days** after exposure. The average incubation period of COVID-19 is reported to be about **5 days**.

Eighty percent of patients with confirmed COVID-19 have mild symptoms.

In very severe cases, patients with COVID-19 have developed pneumonia in both lungs. In some cases, COVID-19 can be fatal.

How Can COVID-19 Infection be Prevented?

Wash your hands often with soap and warm water for at least 20 seconds - use an alcohol-based hand sanitizer if soap and water are not available.

Avoid touching your eyes, nose and mouth with unwashed hands.

Cover your cough or sneeze with a tissue, then throw the tissue in the trash.

Stay home if you're sick.

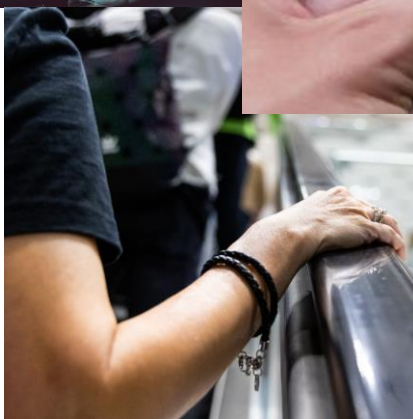
Avoid close contact with people who are sick.

Get a flu shot! A flu shot won't protect against COVID-19, but if you do get the flu, your symptoms will be less severe, easing the burden on health care facilities.

Sing "Happy Birthday" two times through as you're washing.



Where Have **Your** Hands Been?



How Can COVID-19 Infection be Prevented?

Clean frequently touched surfaces and objects daily (e.g., tables, countertops, light switches, doorknobs, cabinet handles) using regular household cleaning products and water.

Clean your electronic devices (phones, tablets, laptops, keyboards) with approved wipes or cleaning products.

Always follow the manufacturer's instructions for all cleaning and disinfection products.



Should I Be Tested for COVID-19?

Call your healthcare provider if:

- You feel sick with fever, cough or difficulty breathing.
- You have been in close contact with a person known to have COVID-19.
- You recently traveled from an area with ongoing spread of COVID-19.

Your healthcare provider will work with Public Health to determine if you need to be tested for COVID-19.

People who think they may have been exposed to COVID-19 **must call their healthcare provider before going to a provider's office, emergency department or urgent care.**

What Do All These Things Mean?

Community spread means people have been infected with the virus in an area, including some who are not sure how or where they became infected.

Social distancing means remaining out of congregate settings, avoiding local public transportation (e.g., bus, trains, ride share), and maintaining distance (approximately 6 feet) from others.

Congregate settings are public places where close contact with others may occur, such as shopping centers, theaters, stadiums, workplaces and schools.

Incubation period refers to the time from exposure to an infection to the onset of symptoms. Different diseases have different incubation periods.

Isolation separates those with who **are sick** with a contagious disease from those who are not to avoid transmission.

Quarantine separates and restricts movement of people who **may have been exposed** to a contagious disease, but **do not show symptoms**.

Epidemic is a rapid increase in the number of cases of a disease above what is normally expected in a specific population.

Pandemic refers to a global epidemic or one that has spread over several countries or continents, affecting many people.

Outbreak carries the same definition as epidemic, but it is used for a more limited geographic area.

Preparing Your Household for a COVID-19 Outbreak

- ✓ Keep an adequate supply of water, food and pet food in your home. If you take prescription drugs, contact your health care provider about keeping an emergency supply at home.
- ✓ Meet with family, relatives, and friends to discuss possible needs in the event of an infectious disease outbreak.
- ✓ Join neighborhood information webpages or emails.
- ✓ Plan ways to care for people at higher risk - the very young, older people, people with chronic diseases or compromised immune systems.
- ✓ Choose a room in your home that could be used to separate family members who become sick.
- ✓ Create an emergency contact list of family members, friends, neighbors, health care providers, teachers, employers and others.
- ✓ Keep a working thermometer and medications, like decongestants, expectorants and ibuprofen or acetaminophen on hand.
- ✓ Know the preparedness plans of your children's childcare, schools and/or colleges.
- ✓ Plan for childcare should schools temporarily close.
- ✓ Ask about your employers' preparedness plans, including sick-leave policies and telework options.

How to prevent the spread of: **CORONAVIRUS DISEASE 2019** (COVID-19)

INFECTION PREVENTION STEPS

- ✓ **Wash your hands often** with soap + water.
- ✓ **Avoid touching your eyes, nose + mouth** with unwashed hands.
- ✓ **Cover your cough or sneeze** with a tissue, then **throw the tissue** in the trash.
- ✓ **Avoid close contact** with people **who are sick**.
- ✓ **Get a flu shot!**
- ✓ **Clean + disinfect frequently touched objects and surfaces** such as counters, door knobs, desks, keyboards, tablets and phones.

Keeping hands clean is one of the most important things we can do to stop the spread of respiratory illnesses like flu and COVID-19.



USE SOAP



PALM TO PALM



BACK OF HANDS



FINGERS INTERLACED



BASE OF THUMBS



FINGERNAILS



WRISTS



RINSE HANDS



DRY HANDS

PROPER HANDWASHING TIPS

- Wash hands thoroughly with soap + warm water.
- Wash for 20-30 seconds or sing "Happy Birthday" two times through.
- Soap and warm water are the best way to clean your hands, but if they aren't available, use an alcohol-based hand sanitizer, that contains at least 60% alcohol.

HOW TO USE HAND SANITIZERS

- Apply the sanitizer to the **palm of one hand** (follow label directions on how much to use).
- Rub hands together.
- Rub the sanitizer over **all the surfaces of your hands + fingers** until your hands are dry.

Preparing Schools for Outbreaks of COVID-19

Review, update and implement emergency operations plans.

Communicate with school staff and parents about measures to prevent illness – flu shots, handwashing, covering coughs and sneezes with a tissue, stay home if you're sick.

Monitor and plan for absenteeism – students, faculty and staff. What level of absenteeism will disrupt teaching and learning, as well as ensuring a safe environment for students and staff?

Establish procedures for students and staff who become sick at school or arrive to school sick.

Continue to perform routine environmental cleaning, including frequently touched surfaces, desks, keyboards and tablets.

Preparing Businesses for Outbreaks of Covid-19

Have a plan to continue your essential business functions.

Cross-train personnel to perform essential functions so that the work can continue if key staff members are absent.

Develop guidelines for employees to telework.

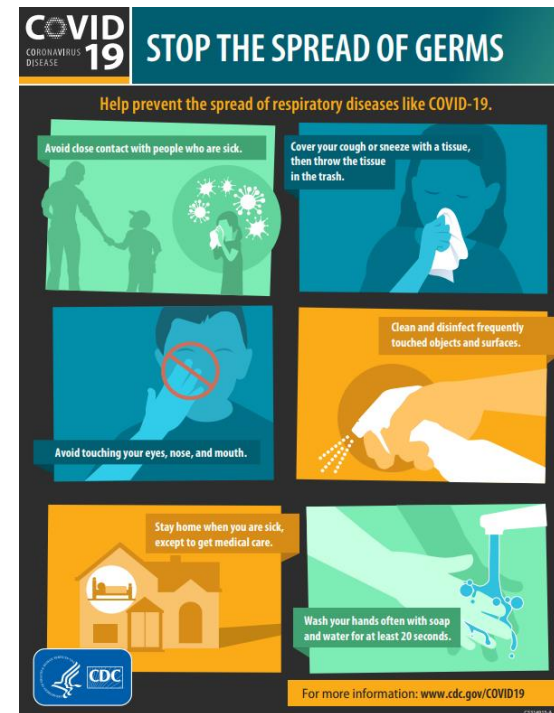
Assess your essential functions and the reliance that the community has on your services or products.

Encourage sick employees to stay home.

Reinforce healthy behaviors such as handwashing with soap and water, covering a cough or sneeze with a tissue, get a flu shot.

Provide soap and water and alcohol-based hand rubs in the workplace.

Monitor for and discourage stigma and discrimination in the workplace.



Preparing for Community Mass Gatherings



Promote messages that discourage people who are sick from attending events.

Meet with the emergency operations coordinators or planning teams at your venues.

Establish relationships with key community partners and stakeholders.

Provide COVID-19 prevention supplies at your events, including sinks with soap, hand sanitizers, and tissues.

Identify actions to take **should you need** to postpone or cancel events.

Update and distribute **timely and accurate emergency COVID-19 information.**

COVID-19 and Stigma

**Diseases can make anyone
sick regardless
of their race or ethnicity or
where they live!**



People of Asian descent, including Chinese Americans, are not more likely to get COVID-19 than any other American.

Stopping stigma can help communities withstand or recover quickly from difficult situations, such as disease outbreaks.

Communicating the facts that viruses do not target specific racial or ethnic groups, and how COVID-19 spreads can **help stop stigma.**

COVID-19 FAQ

Is there a vaccine, drug or treatment for COVID-19?

To date, there is no vaccine and no specific antiviral medicine to prevent or treat COVID-2019. However, those affected should receive care to relieve symptoms. People with serious illness should be hospitalized.

Should I wear a mask to protect myself?

Only wear a mask if you are ill with COVID-19 symptoms (especially coughing) or looking after someone who may have COVID-19.

What about travel?

CDC provides recommendations on postponing or canceling travel through travel notices. Travel notices are based on assessment of the potential health risks involved with traveling to a certain area. No matter where you travel or *how* you travel, be aware of the COVID-19 situation at your destination and practice infection prevention: wash your hands, stay away from people who are sick, cover your cough or sneeze with a tissue, don't touch your face with unwashed hands.

COVID-19 FAQ

Can I get COVID-19 on an airplane?

Because of how air circulates and is filtered on airplanes, most viruses and other germs do not spread easily on airplanes. Although the risk of infection on an airplane is low, travelers should try to avoid contact with sick passengers and wash their hands often with soap and water or use hand sanitizer containing at least 60% alcohol.

Am I at risk for COVID-19 from a package or products shipped from China?

Currently there is no evidence to support transmission of COVID-19 associated with imported goods and there have not been any cases of COVID-19 in the United States associated with imported goods.

How long does the virus survive on surfaces?

It is not certain how long the virus that causes COVID-19 survives on surfaces. Studies suggest that coronaviruses (including the COVID-19 virus) may survive on surfaces for a few hours or up to several days. If you think a surface may be infected, clean it with simple disinfectant to kill the virus and protect yourself and others.

COVID-19 FAQ

Can I catch COVID-19 from my pet?

No. There is no evidence that companion animals or pets such as cats and dogs have been infected or could spread the virus that causes COVID-19.

Who is at risk of developing severe illness?

While we are still learning about how COVID-2019 affects people, older persons and persons with pre-existing medical conditions (such as high blood pressure, heart disease, lung disease, cancer or diabetes) appear to develop serious illness more often than others.

Will the flu shot prevent COVID-19?

No, the flu shot won't protect against COVID-19, but it can help protect against serious flu complications or lessen symptoms if you get it, lessening the strain on health care facilities.

Can I get COVID-19 from Corona beer?

No, you can't get COVID-19 from Corona beer. Beer neither causes infection with a virus, and it does not cure it.

Can you get COVID-19 if you eat at Chinese restaurants in the U.S.?

No, you can't get COVID-19 eating in a Chinese restaurant.

Last Thoughts

Stay calm and be prepared.

Get your information from reliable and accurate sources rather than to buying into hype and misinformation.

<https://dph.georgia.gov/>

<https://www.cdc.gov/>

<https://www.gadoe.org/External-Affairs-and-Policy/communications/Pages/coronavirus.aspx>

Be kind, staying mindful of actions that could perpetuate discrimination or stigma associated with COVID-19 or other infectious diseases.

Prevention, not panic!



COVID-19 (Coronavirus) Preparation



Parents

- ▶ Special Education State Advisory Panel
- ▶ Parent Advisory Council

PARENT PORTAL

Teachers

- ▶ Teacher Resource Link
- ▶ Teacher/Leader Effectiveness
- ▶ Professional Learning

GREAT TEACHERS

Students

- ▶ Student Advisory Council
- ▶ Career Clusters/Pathways
- ▶ Assessments

STUDENT SPOTLIGHT

ABCs

- ▶ Accountability
- ▶ Accounting Services
- ▶ Advanced Placement

SCHOOL FINDER

COVID-19 (Coronavirus) and Schools

Printable version of this information

The Georgia Department of Education (GaDOE) is working closely with the Office of the Governor, the Georgia Department of Public Health (GaDPH), and other agencies to ensure local school districts, parents, and students have the most accurate and up-to-date information regarding COVID-19 (commonly called coronavirus). State School Superintendent Richard Woods is a member of Governor Brian Kemp's Coronavirus Task Force, and GaDOE's Office of School Climate and Safety is communicating daily with GaDPH and its Commissioner, Dr. Kathleen Toomey.

GaDOE has distributed detailed guidance to school districts on the preparations they should take to prepare for the potential spread of COVID-19, and is distributing the most up-to-date guidance from GaDPH and the Centers for Disease Control and Prevention (CDC) as it is released.

Important Links

- Georgia Department of Public Health guidance
- CDC guidance
- GaDOE Office of School Safety & Climate
- GaDOE pandemic planning guidance for school districts

Frequently Asked Questions

Where can I find additional information and resources about COVID-19?

You can find the most up-to-date guidance from the Georgia Department of Public Health at dph.georgia.gov/novelcoronavirus. You can find the most up-to-date information from the Centers for Disease Control and Prevention at cdc.gov/coronavirus. You can view information and updates from the Georgia Department of Education, including guidance released to schools, on this webpage.



What can my student and I do to stop the spread of COVID-19?

- Keep children who are sick at home. Don't send them to school.
- Teach your children to wash hands with soap and water for 20 seconds. Be sure to set a good example by doing this yourself.
- Teach your children to cover coughs and sneezes with tissues or by coughing into the inside of the elbow. Be sure to set a good example by doing this yourself.
- Teach your children to stay at least three feet away from people who are sick.
- People who are sick should stay home from work or school and stay away from other people until they are better.

What should I do if my child exhibits symptoms?

Contact your doctor, a local public health clinic, or the local board of health. The Georgia Department of Public health is currently advising that individuals who have traveled from affected countries/areas in the past 14 days and have a fever, cough, or difficulty breathing should seek medical care, and should contact their healthcare provider and inform them of their travel history before going in.

Will my child's school close?

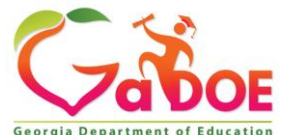
The Georgia Department of Education is following the direction of the Georgia Department of Public Health regarding school closures. We are also advising local school districts to follow the direction of their local board of health. At this time, the Georgia Department of Public Health has advised us that students who are not ill can safely attend schools. We are in regular contact with GaDPH and will immediately inform school districts if their recommendation changes.

What will the Georgia Department of Education do to help students continue learning if schools close?

We are advising school districts to develop a plan to continue student learning should they need to close, using resources such as study packets, cable access, virtual school/online classes, etc. GaDOE's Office of Teaching and Learning is compiling virtual educational resources that will be provided to support schools' efforts.

Preparing Schools for Outbreaks of COVID-19

What to Consider: Guidance/Suggestions



- ✓ Provide *ongoing communication* to key staff members on their roles and responsibilities in case the situation escalates.
- ✓ Keep staff and parents current with updates through the school district website, social media, etc.; ask PTA or PTSA to assist with updated messages; make certain that health-related information has been verified for accuracy by the local health department.
- ✓ Alert all principals and other school leaders and staff of the current status and remind them that the situation may change.
- ✓ Monitor student and staff attendance daily and report to the local health department any school where attendance has significantly decreased.



- ✓ Alert principals and other school leaders and staff to the possibility of cancellation or modification of extracurricular activities.
- ✓ Continue surveillance of staff, students, school visitors, and other personnel to monitor illness symptoms.
- ✓ Consider canceling, modifying, rearranging, rescheduling, postponing out-of-state and out-of-country field trips.
- ✓ Screen staff, students, and others returning from high-infection countries for illness symptoms.



- ✓ Sanitize schools and buses daily, as per local health department guidelines; implement sanitizing verification process.
- ✓ Be alert to any school visitors with illness symptoms, and do not let them remain in the school.
- ✓ Isolate ill students, staff, and others in pre-determined locations in the school until they can be sent home or picked up by authorized persons.
- ✓ Ask Human Resources to closely monitor staff attendance.



- ✓ Ask Human Resources to contact substitute teachers to determine availability for staffing as necessary.
- ✓ Work with school nutrition staff to determine alternative methods of feeding students if necessary.
- ✓ Pre-stage educational continuity plans (e.g., study packets, online learning classes, access to learning podcasts, etc.)
- ✓ Other *pre-stage* considerations:
 - Where possible, limit or cancel gatherings of groups larger than normal class size during the school day (e.g. student assemblies).



✓ Other *Pre-Stage* Considerations:

- Implement student social distancing when possible, for example,
 - Spacing of student desks
 - Discourage prolonged student congregation in hallways and lunchrooms
 - Limit group activities and interaction between classes
 - Modify gym class, choir or other school activities that place large numbers of individuals in close proximity
 - Work with school nutrition staff to possibly alter lunch periods more widely; feed students in the classrooms, etc.



Additional Questions



Will the GaDOE issue guidance on testing and the CCRPI?

- At this time, no changes have been made to the state testing window or to planned CCRPI calculations for 2019-2020.
- Additional guidance will be provided should adjustments become necessary.
- The safety and well-being of all children and adults must be the first priority. As we learn more about the impact of COVID-19 on Georgia school districts, the GaDOE Office of Assessment and Accountability will make adjustments to testing and accountability policies if needed.



Should school districts inform the GaDOE about excessive student and/or staff absences?

- Yes. Please send an email to schoolsafety@doe.k12.ga.us

How should a school district decide when or if to cancel extracurricular activities and school field trips?

- It is recommended that local board of health experts be consulted to determine what if any risks may be present.

Who should be involved in a discussion to close schools due to COVID-19?

- The decision to close schools should be based on circumstances and should be a joint decision of the local school board, local superintendent, local board of health with guidance from the Georgia Department of Public Health, and the State School Superintendent.



If schools are closed, do the days missed have to be made up?

- School districts have instructional school-day and school-year flexibility with Charter System and SWSS contracts. (*Check your contract to see if it includes school-day and school-year flexibility*)
- School districts without flexibility status should make up days missed based on their revised school calendar. If the Governor declares a State of Emergency (SOE), the days included in the SOE declaration do not have to be made up.
- The decision to make up missed days should be based primarily on the time necessary to recover learning and what is in the best interests of students and staff.



Does the GaDOE have any resources for continuity of instruction if schools close?

- Go to the GaDOE COVID-19 webpage at gadoe.org/coronavirus for resources.
- Consider using online educational opportunities as a way to keep students and educators engaged in learning should we experience quarantines and/or school absences.
- Some leaders may choose to implement online learning; however, they must adhere to IDEA/IEP requirements as well as consider how students will connect to digital tools and access learning.
- Educational leaders should consider whether and how any distance learning solutions affect students equitably.
- The GaDOE is working with Georgia Public Broadcasting to offer other methods to access learning.



COVID 19 (Coronavirus) Update



Office of the Governor

Ian Caraway

Local Government Liaison

ian.caraway@georgia.gov | 404-295-8534



Georgia Department of Public Health

dph.georgia.gov



Georgia Department of Education

Dr. Garry McGiboney

Deputy Superintendent

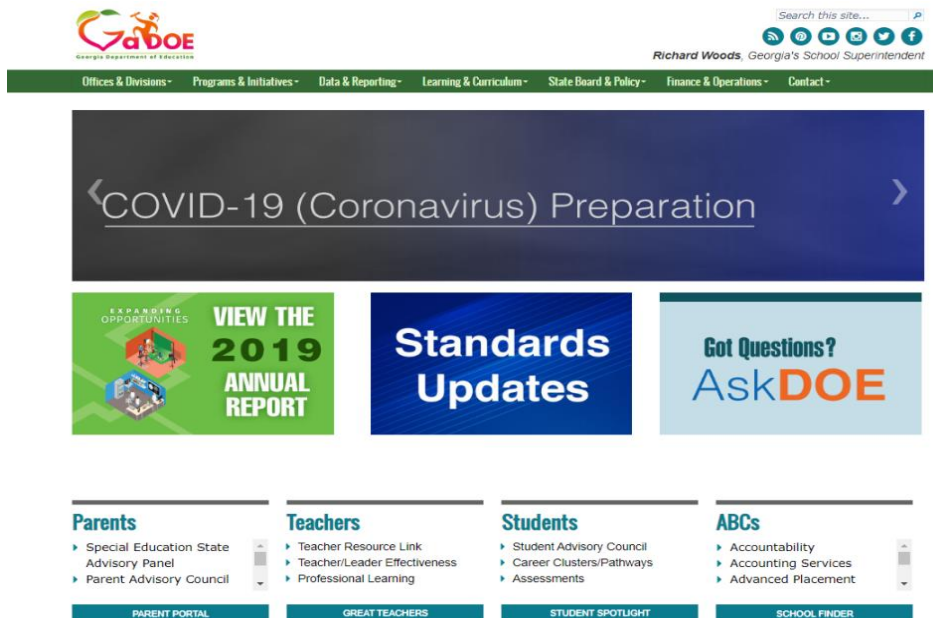
gmcgiboney@doe.k12.ga.us | 678-637-1261

gadoe.org/coronavirus



Submit questions at any time to

schoolsafety@doe.k12.ga.us



Check the webpage for updates to Frequently Asked Questions (FAQ)